

An innovative narrow profile paralleling switchgear from Power Systems Solutions, Inc.



This switchgear is designed for the application of a single generator operating in parallel with a utility power source.

The switchgear's many features include:

- **Narrow Width of Only:**
 - 30 Inches for up to 2000 Amperes
 - 34 Inches for up to 3200 Amperes
- **Designed for Major Generator Brands**
- **Models & Modes of Operation**
 - SLIM** - Softloading Isolated Mode
 - SLIE** - Softloading Import / Export
 - SLBL** - Softloading Base Load
- **Service Entrance Rated**
- **UL891, UL1558, UL508A, CSA**

- **Optional PSSI's web-TOUCH™ Monitoring System**
- **Remote Dial-in Access for System Diagnostics**
- **Suitable for Placement in Generator Module / Container**
- **Better Space Allocation for Retrofits**
- **Slide-out Panel for Easy Access & Space Savings**

The switchgear's small footprint and narrow profile is due to two new design features.

First: the slide-out control panel. Traditionally the control panels have been incorporated in the back of the control sections. Such an arrangement requires a wider control section. The slide-out design takes advantage of the depth of the control section and allows a much narrower compartment of only 12 inches. This design also has the added benefit of providing ease of setup and service work for service technicians.

Second: the use of new narrow profile breakers that require only an 18 inch power section for two transfer pair breakers of up to 2000 amperes and a 22 inch section for 3200 ampere breakers.



STANDARD & OPTIONAL FEATURES

Standard Features:

- Large 10.4" Color Touchscreen HMI
- Intuitive Interactive Controls
- Modes of Operation:
 - Standby
 - Isolated
 - Base Load
 - Import / Export



- Utility & Generator Metering
- Utility Grade Protective Relay
- Station Battery

Optional Features:

- web-TOUCH™ Monitoring System with Alarm & Event Recorder
- System Annunciation and NFPA-110

Animated One-Line



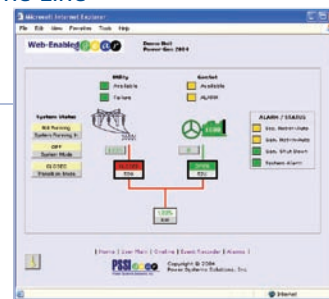
Monitoring System

The switchgear can be equipped with PSSSI's web-TOUCH Monitoring System. This system contains a web server module that contains multiple web pages designed specifically for the switchgear.

Pages can be viewed locally or remotely using a PC running Microsoft® Internet Explorer. Use of this readily available web browser eliminates the need for any additional expensive graphical user interface.



Alarms and Status



Events and Alarms Recorder



Optional web-TOUCH™ Monitoring System

SWITCHGEAR SPECIFICATIONS

- Up to 600 VAC and 3200 Amperes
- Interrupting Capacity up to 100 kAIC
- 60 Hz, 3 Phase, 3 or 4 Wire
- UL891, UL1558, UL508A, CSA
- Applicable ANSI Standards
- NEMA SG3 & SG5 Standards
- NEMA 1 and NEMA 3R Enclosures
- Service Entrance Rated & Labeled
- Optional Walkin & Non-walkin Outdoor Enclosure Design

Contact PSSSI for further information and detailed specifications.



Power Systems Solutions, Inc.

9210 Wyoming Ave. North
 Minneapolis, MN 55445
 www.psssigear.com
 1.800.280.5054